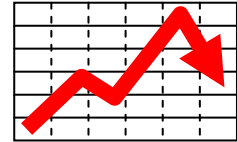


Earl J. Lum
+1-650-430-2221
elum@ejlwireless.com

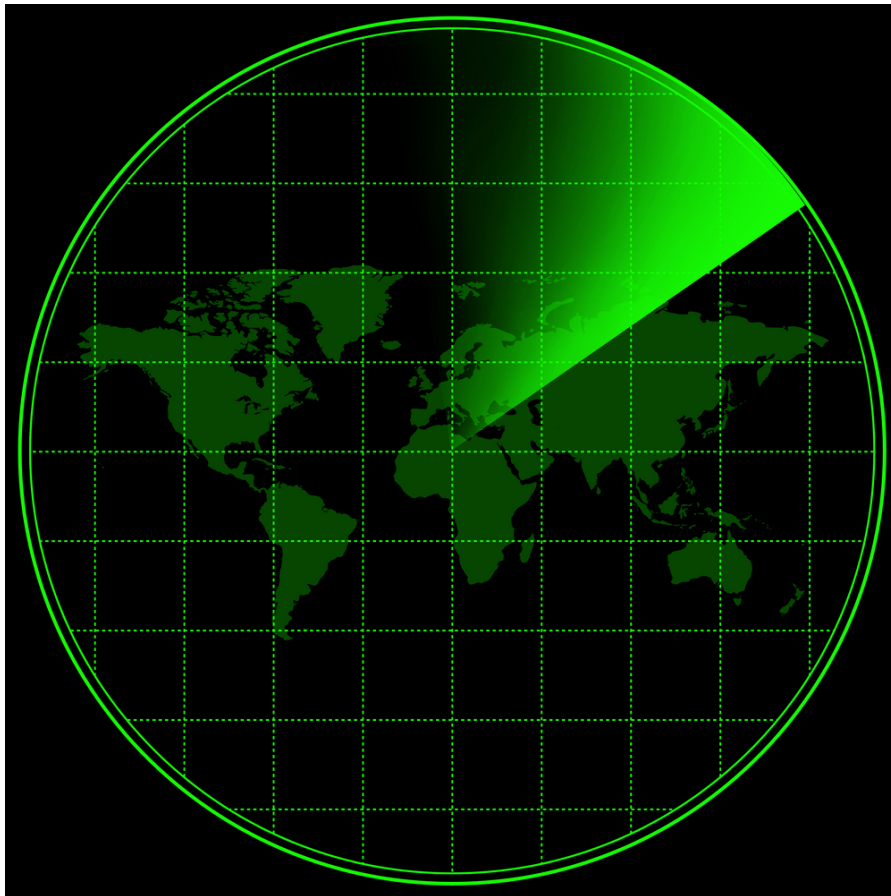


China Wireless Infrastructure Industry 2015 Outlook

Near-Mid Term Impact of Graft Probe and Mobile Operator Consolidation

“Under the Radar” Research Series

April 2015



Entire contents © 2015 EJL Wireless Research LLC. All Rights Reserved. Reproduction of this publication in any form without prior written permission is strictly forbidden and will be prosecuted to the full extent of US and International laws. The transfer of this publication in either paper or electronic form to unlicensed third parties is strictly forbidden. The information contained herein has been obtained from sources EJL Wireless Research LLC deems reliable. EJL Wireless Research disclaims all warranties as to the accuracy, completeness, or adequacy of such information. EJL Wireless Research LLC shall bear no liability for errors, omissions, or inadequacies in the information contained herein or for the interpretation thereof. The reader assumes sole responsibility for the selection of these materials to achieve their intended results. The opinions expressed herein are subject to change without notice.

TABLE OF CONTENTS

MARKET BRIEF	3
Background.....	3
Methodology	3
CHINA WIRELESS TELECOM ANALYSIS	4
How it all started... ..	4
The order flow ramp begins.....	5
China Issues FDD-LTE licenses.....	7
So why is the market NOT seeing demand rebound?	7
The real reason is the grafting probe.....	7
Mobile Operator Consolidation.....	8
Wireless Ecosystem Impact	10

EXHIBITS

Exhibit 1: China TD-SCDMA/TDD-LTE Frequency Spectrum Allocation by Mobile Operator	5
Exhibit 2: China Mobile TDD-LTE Network Deployment Timeline.....	6